



COMPANY PROFILE

2022

# About Northstar Elements

- NorthStar Elements as general interior turnkey contracting company has expertise in Corporate and unique commercial interiors.
- we provide innovative and creative solutions to projects of any complexity.
- We at Northstar Elements work our way for better, faster and simpler interior solutions.



“ Your concept, Our product ”

2013

FOUNDED

+75

STAFF

+500

VENDORS

33

CLIENTS

+45

PROJECTS





## MISSION

To be one of the leading interior solution providers in the industry.  
To offer unique and innovative interiors, which recreate the entire ambience of any given space.

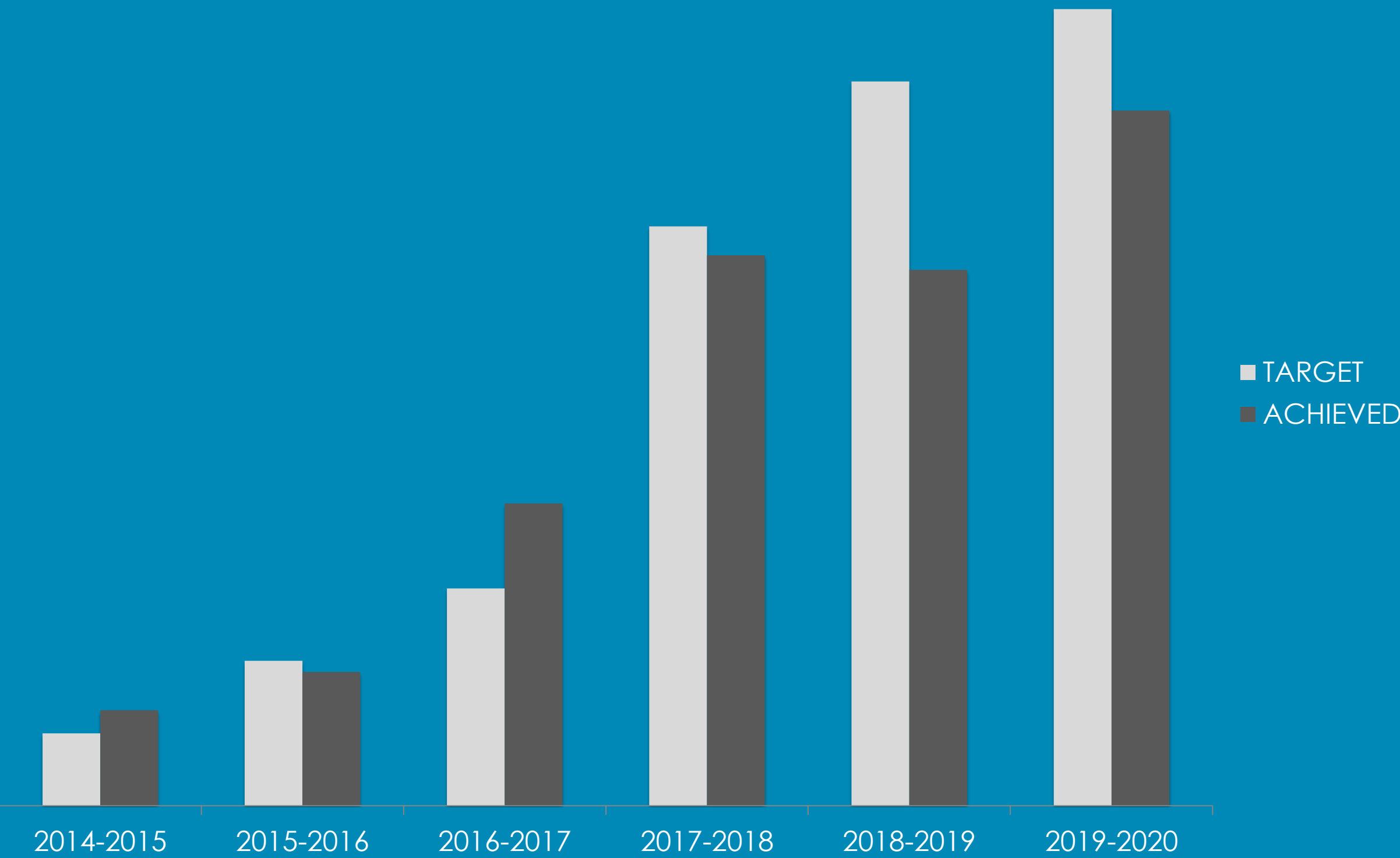


## VISION

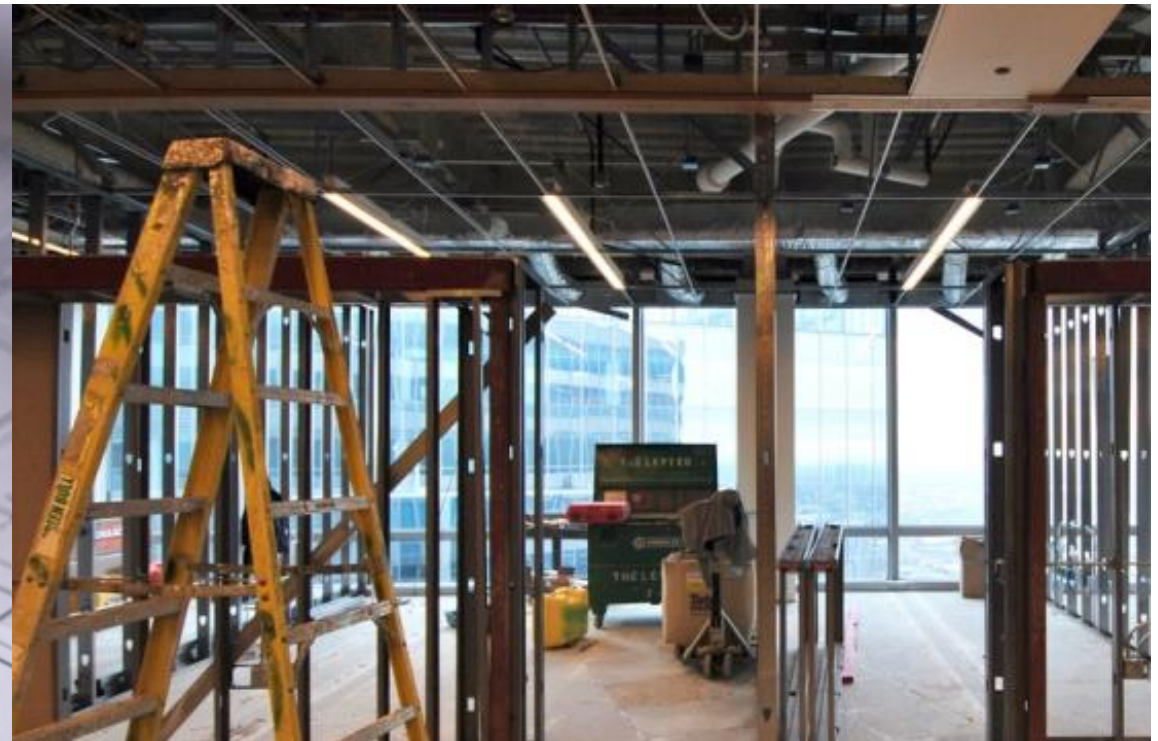
To simplify complexities  
To deal with challenges and meet your needs  
To create elegant and functional interiors  
We at North star Elements work our way for better, faster and simpler interior solutions.



# OUR STATISTICS



## SERVICES WE OFFER



- DESIGN AND BUILD
- GC PROJECTS
- CIVIL AND INTERIORS



## STATUTORY COMPLIANCES

We are strictly following the rules and regulations passed by the Parliament, State Assemblies, local governments, etc. In relation to Human Resources (HR),

Rules and regulations under various labor laws like

PF

ESI

Minimum Wages

CAR Policy

WC Policy

Labor License

Project based Labor License

**Provident fund:** Employees Provident fund (EPF) is implemented in our organization as per government norms and guidelines.

**ESI:** All our employees who are within the guidelines of Employees' State Insurance (ESI) are eligible under Employees' State Insurance Corporation (ESIC) according to rules and regulations of the government.

**Minimum Wages:** We follow the guidelines as per the Indian labour law.

**CAR Policy:** Contractors All Risk (CAR) policy is a comprehensive insurance which covers our workforce from arrival of construction material at site till the completion of project.



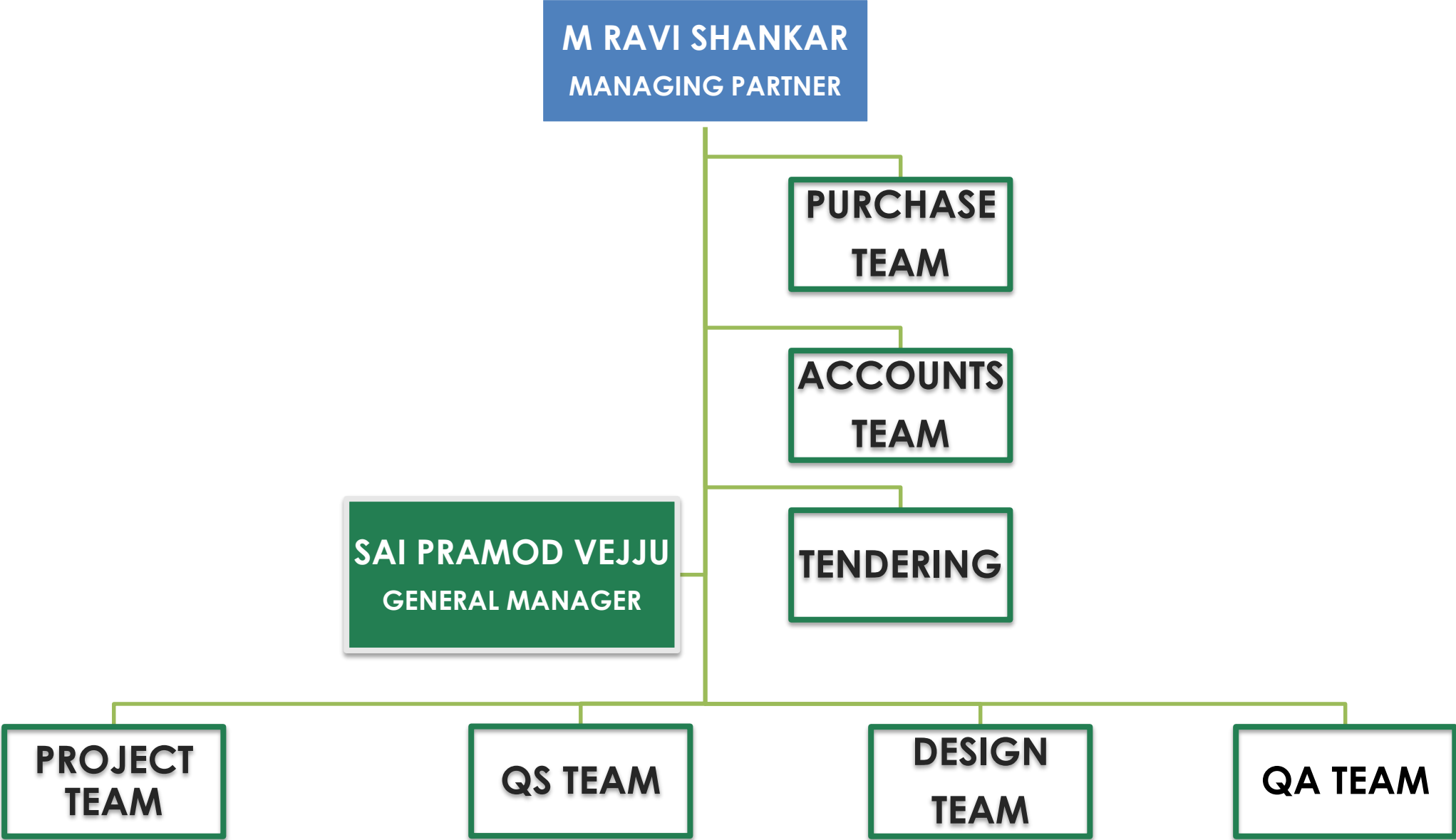
## STATUTORY COMPLIANCES

**WC Policy:** We also have workers compensation policy for all our employees as per government guidelines.

**Labor License:** we acquire labor license and follow all the compliance in relation to the act very firmly.



CORE TEAM



## TEAM STRENGTH

- At **Northstar**, we have a young, spirited ,Well qualified and technically experienced staff who is always up for challenges
- We encourage a healthy and competitive work environment to keep up the spirits of the staff.
- We also organize award programs for the best performer under the following criteria
  - Quality
  - Safety
  - Timelines
  - Waste management
- Being a young and dedicated team, they are always looking for learning experiences and ways to upgrade themselves at every level.
- Our Team at **Northstar** is organized and good at handling a situation under pressure.
- Our back office team never fails to support the project team in their day-to-day operations.
- The effective communication that our back office and project team maintain ,is what keeps our projects going.



# TEAM STRENGTH

## **PURCHASE TEAM:**

- There is a dedicated purchase team in our organization.
- This team plays a major role in ensuring necessary material flow at sites.
- It coordinates, handles, procures and documents all the issues related to material management.
- They are the driving force for a smooth project execution and timely delivery.
- We have implemented an appropriate ERP tool for streamlining procurement process.

## **QS TEAM:**

- We have a well experienced and qualified quantity survey team.
- Their activities like billing, analyzing BOQ, measurements and coordination with other teams ensure a stable and smooth progress of the project.

## **TENDERING TEAM:**

- Our tender team has an experience of more than 10 years and have been associated with us since the beginning.
- The team is well experienced and has knowledge on the tendering processes and other legalities

# TEAM STRENGTH

## QA TEAM:

- The quality assurance team, ensures that the project is executed and delivered with the maximum possible quality.
- The team coordinates at all levels to ensure a promising quality outcome.

## ACCOUNTS TEAM:

- Our accounts team has always taken responsibilities in handling finances of the business
- They are dedicated and work the extra mile to ensure the smooth functioning of the organization at all levels

## DESIGN TEAM:

- We have an in-house design team with a group of well experienced and qualified architects.
- There is always a close coordination between the design, execution, purchase team and architectural entities.
- There are instant decisions taken, quick generation of shop drawings and correction of drawings at any given point during the project.

# WHY IS NORTHSTAR A GO-TO CONTRACTOR ?

## Northstar is ISO:9001 Certified Company

- ✓ REPUTATION FOR QUALITY, CONSISTENCY AND CLIENT SATISFACTION
- ✓ TIMELY HANDOVERS
- ✓ REPEATED CLIENT BASE
- ✓ STRINGENT SAFETY EVALUATIONS
- ✓ EXPERIENCE IN FAST TRACK PROJECTS
- ✓ USE OF ERP TOOLS FOR SMOOTH FUNCTIONING





# OUR CLIENTS

OPENTEXT™



JPMORGAN CHASE & CO.



Honeywell

facebook

Walmart



Danske Bank



synchrony  
FINANCIAL



Q.hub

ThoughtWorks®



flex



Belcan



TERADATA



V-SOFT  
CONSULTING



ITW Signode  
Packaging Solutions



ZenSar  
TECHNOLOGIES



SYSCOM®

meenakshi energy

LTI  
Let's Solve

ivanti

LITTLE RED  
ZOMBIES

INTERNATIONAL  
ARBITRATION  
CENTRE



CALYX™

Gramener  
Insights as Stories



# OUR TIMELINE

2014

flex

SIGNODE

SYSCOM

Dr.Reddy's

2015

synchrony



Q2 SPA

amazon

meenakshi energy

ZenSar  
TECHNOLOGIES

2016

flex

Belcan

amazon

Honeywell

Bally

OPENTEXT

Danske  
IT

V-SOFT  
CONSULTING

ICICI Bank

2017

DBS



amazon

Walmart

L&T Realty

OPENTEXT

IKEA

INDIAN  
IMMUNOLOGICALS  
LIMITED

2018

DBS

facebook

TERADATA

REALPAGE  
Outperform

Q.hub

KIAY  
Kids Learning And You

2019

DBS

LTI

Let's Solve

amazon



2020

DBS

DBS

amazon

JPMORGAN CHASE & CO.

2021

JPMORGAN CHASE & CO.

ivanti

LITTLE RED  
ZOMBIES

INTERNATIONAL  
ARBITRATION  
CENTRE

CALYX

PS  
PROWESS SOFT

Gramener  
Insights as Stories

# OUR PRESENCE



HYDERABAD | CHENNAI | MUMBAI | PUNE | BENGALURU | VIZAG



# OUR APPROACH TOWARDS A PROJECT

- ✓ **Project management structure**
- ✓ **Roles of our project team**
- ✓ **Plan of action**
- ✓ **Safety**
- ✓ **Inspections**
- ✓ **Quality assurance**
- ✓ **Quality control**
- ✓ **Total quality management**
- ✓ **Workforce**



CHECKLISTS AND FORMATS

- PROJECT SCHEDULE
- MATERIAL INDENT TRACKERS
- SAFETY REPORTS & CHECKLISTS
- CLOSEOUT DOCUMENT TRACKER

CLOSE OUT DOCUMENT TRACKER																			
Project Code:				Building Name:										Location: XXXXXXXXXX					
Package	C&I	Electric	HVAC & BMS	Fire Fighting	FA & PA	COMMUNICATIONS	UPS	PAC	Graphics	Signage	Interior Finish	Chairs	Custom Furniture	Light Fixtures	Floors	Carpet			
Vendor Name																			
Contract List	Not Applicable	Not Applicable	Not Applicable	Not Applicable															
Escalation Chart																			
As-Built Drawings - Hard Copies																			
As-Built Drawings - CDs																			
Original Graphic Files																			
O&M Manual																			
Training sign off sheet																			
Warranties																			
T&C Reports																			
List of Makers																			
List of Attic																			
List of Spares																			
Key List																			
Standard Operating procedures																			
Emergency Operating Procedure																			
Statutory Clearances																			
Final Bill																			
No Claim Certificate																			
Remarks																			
PMSC SCOPE	Package wise Handover Documents (Hard)	Package wise Handover Documents (Scan)	Package wise As-built drawings (Hard Copy)	Package wise As-built drawings (Soft Copy)	As-built Numbering Layouts	Finalized Look & Feel	MEP DBs	Lessons Learnt in the Project	Vendor Performance Evaluation	Consultant Performance Evaluation	Project Completion Certificate	PMSC No. Due Certificate	Interior Vendor Photos of Images	Y T C					
Status																			

Check List for Fire Extinguisher

Project Name:

Contractor Name:

Extinguisher Specifications:

Extinguisher No.:

Inspection Date:

Next Inspection Date:

ABC Type

Water Type

Co2Type

1

Condition of the extinguisher (Clean and Tidy)

2

Is the extinguisher corroded.

3

Safety pin is in locking position

4

Condition of discharge nozzle (any blockage / damage)

5

Condition of hose (any leakage / broken)

6

Weight of the extinguisher (Should be match with actual weight written in the body)

7

Availability of visual board.

8

All the indicator gauges (where fitted) in green segment (not to be red)

9

Extinguisher is expired or refilled before refilled date

10

Others

SL NO

DESCRIPTION

YES

NO

REMARKS

Checked by Contractor Safety Officer

Accepted

Rejected

Checked by NSE / Client

Accepted

Rejected

Name

Signature

Date

Name

Signature

Date

Format No. NSE-33-CHS-FE-Ch-34/Rev00/May 2019

MATERIAL INDENT TRACKER

S.No	BOM No / HT-Item / Package	Status (Approved / Under Approval)	Description of Materials With Specification	Make	Code / Cat.	UOM	BOM Qty	Indent Qty.	Received	Yet to received
Indent-03									2/14/2020	
Civil & Finishes										
6	1.05	Approved	Soporex Jointing Chemical	-	-	Bags	-	50	20	30
Insulation Material										
1	1.01, 1.02 & 1.03	Approved	RP Tissue paper	-	-	SMT	-	3000	2100	900
Glass Partation / Style Door / Trims / Lacquered Glass										
1	TW28	Approved	Toilet cubicals	Merino	-	Nos	-	36	-	Not yet received
Door / Hardware										
1	1.10	Approved	Firerated double leaf glass door with partition (Design & Specs as per approvals)	SAINT GOBAIN	-	Nos	-	4	-	Not yet received
2	2.01	Approved	Firerated single leaf metal door (Design & Specs as per approvals)	SAINT GOBAIN	-	Nos	-	5	-	Not yet received
Others & Miscellaneous										
1	1	Approved	Lockers (Quantity as per approved layout)	Fidel	-	Nos	-	331	-	Not yet received
Indent-04									2/27/2020	
Plumbing material & Sanitary Fixture										
1	21	Approved	Urinal	TOTO	UW350HJT	NOS	12	12	11	1
2	21	Approved	Sensor	American Standard	FAS8604-000500BF0	NOS	12	12	-	Not yet received
3	17	Approved	E/WC Wall Mounted with seat covers	American Standard	Access E wall Hung	NOS	36	36	-	-
Door / Hardware										
3	-	Approved	SR	-	-	Kgs	-	50	-	Not yet received
Indent-05									2/27/2020	
Plywood / Laminate / Block Board / MDF / Purlam Board / Wood Section/Gypsum Board										
1	10.00	Approved	BWP 19mm thick ply	Green ply	-	Sheets	-	44	-	Not yet received
Tiles (All Type) / Raised Flooring /Blocks										
3	5.01	Not Approved	Designer tiles flooring	-	-	Sqmt	-	72	-	Not yet received

# PROJECT MANAGEMENT STRUCTURE

## 1. INTERPRET AND PLAN

- We have an pre project internal meeting(kick off) that takes place which involves all the teams.
- Here we have all the teams participate to have a single understanding of the project and its requirements
- We define the roles and responsibilities for the teams.
- We design the project schedule which include the indenting process, drawing tracker, logistic tracker, required workforce, identification of machinery to be used, design of contingency plans, documentation procedures, definition of safety procedures, vendor identification and other important parameters related to the project.

## 2. EXECUTE AND MONITOR

- After project starts with the above agreed parameters, there is a constant monitoring of the project for quality, safety procedures, identification of time lags, comparative analysis of deviations, analyzing and comparing the work flow with DPR and BOQ, workforce management, need for approvals, PMC meetings,
- Preparation and maintenance of project documents, vendor coordination, Mock-up arrangements, bill generation procedures,

## 3. PROJECT CLOSURE

- Completion of Snag list, Preparation of handing over documents, sign-off on key list, asset list, attic stock and as build drawings.
- Consolidation of variation & non-tender items if any.

# PROJECT MANAGEMENT STRUCTURE

## 1. INTERPRET AND PLAN

- Resource planning
- Site instruction document to be defined
- Sample ,approval and mockup trackers to be made
- Understanding documents to be submitted to PMC.
- Going through drawings and BOQ for thorough understanding of the scope of works,

## 2. EXECUTE AND MONITOR

- Quality checks
- Mockup and sample approvals
- Shop drawing approvals
- Raising RFIs for queries

## 3. PROJECT CLOSURE

- Joint measurement certification with PMC/cost consultants
- Final Bill closure.



# ROLES AND RESPONSIBILITIES OF OUR PROJECT TEAM

- Preparation of project schedule
- Monitoring site execution with reference to the project schedule
- Co-ordination with all concerned teams of project for required drawings ,work orders, BOQ, material etc. to achieve the target of the project in time.
- Managing Material Procurement on site as per the requirements given at various Stages of work
- Updating any progress related issues to management in monthly and weekly review meetings to streamline the work in all respect
- Managing the workforce as per requirement
- Vendor management
- Allocation of job works
- Defining roles and responsibilities for the team.
- Identifying Non Tender items.
- Keeping a constant check on the quality of work at site
- Taking required approvals



# ROLES AND RESPONSIBILITIES OF OUR PROJECT TEAM

- Preparation of DPRs
- Proper documentation and implementation of site instructions
- Taking quick on site decisions for unplanned issues on site
- Waste management
- Quick quality check on arrived material
- Ensuring that team follows safety rules



# IN-HOUSE WORKFORCE AT A GLANCE

- Carpenters
- Pop specialist
- Civil masons
- Painters
- House keeping
- Welders
- Plumbers
- Electricians
- HVAC technicians



# SERVICE VENDOR LIST

SERVICE VENDOR LIST				
S.NO	Support services	Vendor 1	Vendor 2	Vendor 3
1	ELECTRICAL, LV & IT PASSIVE	SKYLINE ELECTRICALS	AK ELECTRICALS,	MICRON
2	HVAC & BMS & PAC	TECHNO GREEN	SRI COMFORTS	ABS
3	FAPA SYSTEMS	CARE SYSTEMS	DIGITECH	PRUDENTIAL
4	FIRE PROTECTION SYSTEMS	CARE SYSTEMS	CENTAURFSA	PRUDENTIAL
5	GRAPHICS & SIGNAGES	MIDAS TOUCH	ANNIMOSPHERE	IMMAZLE
6	UPS & BATTERIES	APC	EMERSON	MICROROTEK
7	PLUMBING	KK ENTERPRISES	KESHAVA PLUMBING AND WATERPROOFING	SIB NARAYANA PLUMBING
8	KITCHEN EQUIPMENTS	KARGIL	KUMAR EQUIPMENTS	RAJALAKSHMI

# **SAFETY**

**is a Full Time Job**

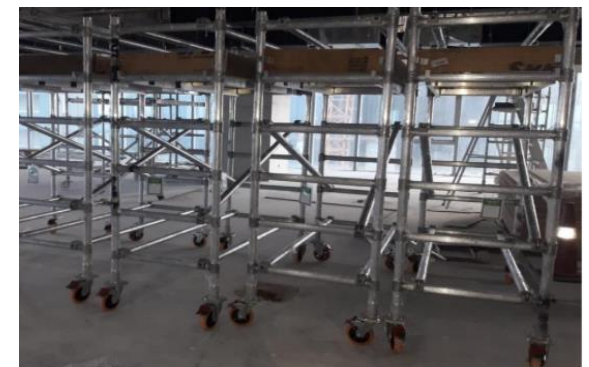
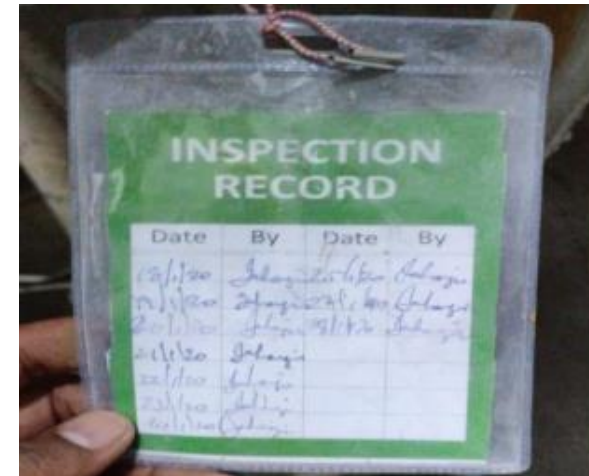


**Don't Make It a  
Part Time Practice**



# WE THINK SAFE, WE WORK SAFE

- At NSE, we constantly monitor the site for safety violations and probable accidents
- We organize quizzes, discussions, rewards for performances, and many other activities to motivate the safety team.
- Periodic safety inspection reports by our in house safety officer.
- Agreement with the closest multi- specialty hospital to treat our patients on priority.
- Preventive precaution - a priority safety measure.
- Clear signage and safety posters are installed and Stand-by fire fighting equipment is available at sites.
- We provide standard PPE equipment like Helmet, safety glasses, mask, gloves and boots
- We ensure a construction first Aid kit is provided at every site.
- We ensure proper inspection of scaffolding ladders, ladders and tool kits with inspection tags.
- Barricading logistics, hot works, concrete mixing and other works that involves safety is done.
- Emergency preparedness plan.
- We start the site with a Tool Box Talk every day



## ROLES AND RESPONSIBILITIES OF SAFETY OFFICER

- Safety manager shall review and implement the requirements for environment, health and safety at site in consultation with the project manager and project engineer at regular intervals.
- He shall issue specific directives to sites concerning environment health and safety.
- He shall periodically evaluate the safety performance of the site.
- He shall enforce, lead, direct and follow-up with administration execution of environment health and safety procedures
- Ensure by regular inspections and surveys and other techniques that facilities / equipment are operated and maintained to a high standard of safety so that risk of injury to personnel, breakdown and damage to property is minimized and high quality of output is achieved with safety.
- Integrate health & safety in all decisions dealing with purchase of machinery, materials and personal protective equipment.
- Plan and maintain desired standards of Housekeeping.
- Ensure implementation of recommendations of the statutory authorities and others



# ONE LAKH SAFE MAN HOURS CELEBRATION



AMAZON SAFETY CHAMPIONS



# TOOL BOX TALKS AT NSE SITES





# OUR STANDARDS



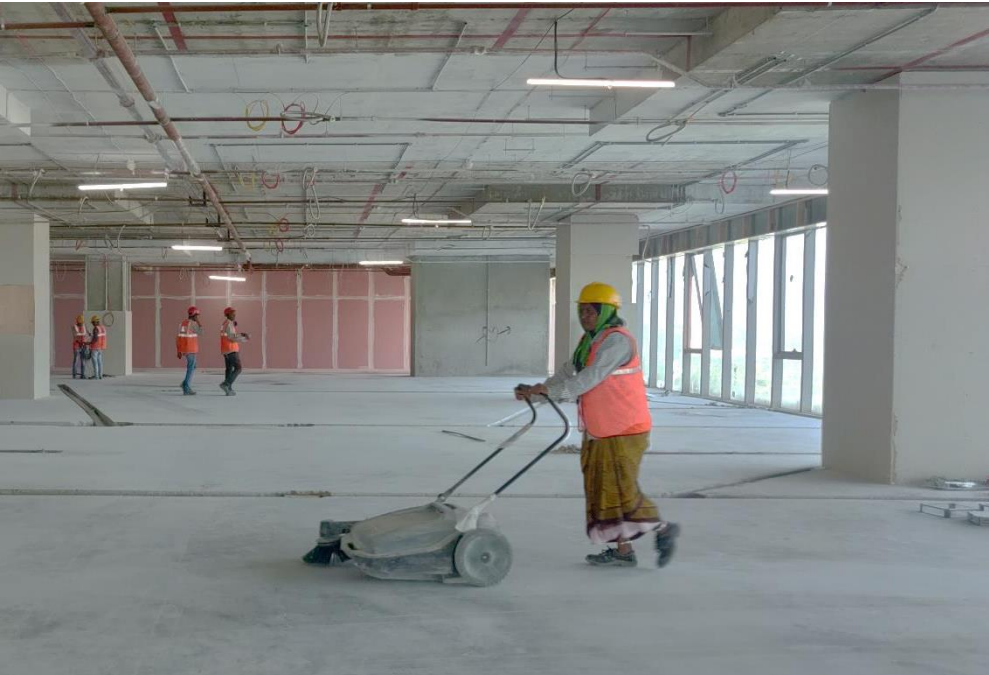
PROPER BARICATION FOR MATERIAL STACKING WITH SUPPORTS



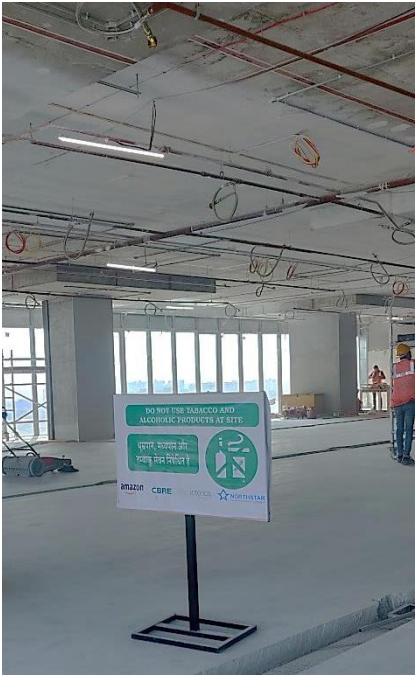
STENCIL FLOOR MARKING



NEAT AND CLEAN SITES



APPROPRIATE MACHINERY FOR CLEANING



SAFETY SIGNS



# WORKING THE PANDEMIC WAY

S.NO	COVID - 19 NEW MEASURES TO BE IMPLEMENTED	GENERAL MEASURES WE FOLLOW	CHANGES REQUIRED
1	SITE DISINFECTION AND SANITISATION	WE USUALLY KEEP THE SITE CLEAN FROM DUST AND DEBRIS EVERYDAY.	WE HAVE TO DISINFECT THE SITE EVERYDAY WITH SILVER HYDROGEN PEROXIDE TO PREVENT SPREAD OF ANY INFECTION.
2	DAILY LABOUR PERSONAL SANITISATION	WE ADVISE THE LABOUR TO COME CLEAN TO THE SITE	WE SHALL ENSURE THAT EVERY LABOURER IS SANITISED AT REGULAR INTERVALS
3	MATERIAL SANITISATION	WE DO NOT SANITISE THE MATERIAL	WE SHALL IMPLEMENT THE SAME BY SPRAYING DISINFECTANT.
4	COMPULSORY USE OF NOSE MASK	WE USE NOSE MASK ON A REGULAR BASIS	TO BE IMPLEMENTED ON A STRICTER NOTE FOR EVERYONE ENTERING THE SITE.
5	SOCIAL DISTANCING	SOCIAL DISTANCING WAS NOT A NEED BEFORE	SOCIAL DISTANCING WILL BE IMPLEMENTED WITH AN UNCOMPROMISING VIGILANCE. SITE WORK IS PLANNED ZONE WISE TO E MPLOY MINIMAL LABOUR.
6	THERMAL CHECK	WE DID NOT CHECK ANY TEMPERATURES BEFORE.	WE SHALL CHECK BODY TEMPERATURES OF EVERYONE WHILE ENTERING THE SITE.
7	ON SITE DOCTOR FOR COVID-19 CHECKS	THERE IS AN ON CALL DOCTOR WHO IS AVAILABLE INCASE EMERGENCY OR ACCIDENTS	WE SHALL HAVE AN ON SITE DOCTOR WHO SHALL HELP COVID 19 CHECKS.



# WORKING THE PANDEMIC WAY





# WORKING THE PANDEMIC WAY



BEFORE COVID-19 AT  
NORTHSTAR SITES



AFTER COVID-19 AT  
NORTHSTAR SITES

**Before or after, there will be only a negligible difference as we always and will always follow similar standards.**



**QUALITY IS MORE THAN  
A PROMISE, IT'S  
GENUINE PERFORMANCE**

RON KAUFMAN

---

# HOW WE ACHIEVE QUALITY

- ✓ INSPECTIONS
- ✓ QUALITY ASSURANCE
- ✓ QUALITY CONTROL
- ✓ TOTAL QUALITY MANAGEMENT



## INSPECTIONS:

- We ensure that all the work at site happens according to the approved shop drawings.
- Our design team visits site on regular basis to check the work at site to prevent mistakes that result in rework.
- Inspection takes place with reference to human errors, quality of material, installation methods and
- A feedback report is submitted after each visit with details on the rectifications required.
- An internal snag list is prepared before the PMC team checks for snags.

## QUALITY ASSURANCE:

- We define standards and methodologies to be followed in order to meet the project requirements
- A list is prepared after identifying the areas of possible quality issues for each project before hand
- A checklist is issued to ensure the correct process is followed.

## QUALITY CONTROL:

- Based on the feedback from the inspection, a quality report is prepared to check on the corrections.
- Checklists are issued at every stage to ensure the implementation of procedures.
- No time is wasted in rectification and a compliance report is submitted.





### TOTAL QUALITY MANAGEMENT:

- TQM is not a one time concept but involves continuous learning
- It involves the entire team participation
- After every project, a meeting is organized with entire team and departments to discuss on the lessons learnt.
- A compiled document is prepared considering all the inputs received from different teams and shared with entire staff.
- Based on these experiences, the documentation and procedures for quality control and assurance keep changing for the better with every project at NSE.
- Learning from our past experiences and improving ourselves is how we keep upgrading our team, processes, quality etc.

# MECHANIZATION

- Mechanization helps in improving the quality and capability.
- At Northstar, we use state of art machinery for perfection, ease of work and precision.
- We use saw with vacuum pumps to prevent dust accumulation, nail guns, drills, floor sweepers , laser marking, drills, etc.
- The popular brands we use include Karcher, Hilti, 3M, Bosch, Makita, Euronics, De-walt, Roots etc.



## OUR IN-HOUSE FACTORY VIDEO CLIPS

- Our in house factory has all the required machinery that is required to support us in easing our work.- Storages, hot pressing of laminate, edge bending etc. for readymade pelmets & sill, CNC & laser cut machines for all designer items. This reduces 70-80% of work at our site.
- All our modular furniture is made in our factory and installed at site.





# FEW EXAMPLES OF OUR WORKING PROCEDURES

## STORAGES & LOCKERS

- All the storages, lockers etc are made in factory which helps in minimizing site works.



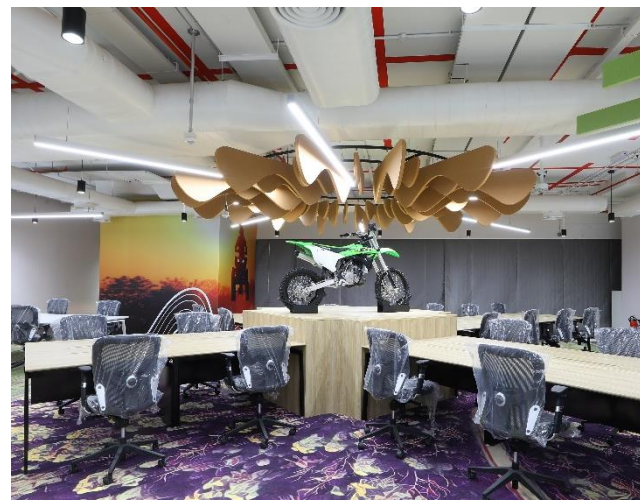
- Designer wall paneling base work done at factory and delivered in installed condition



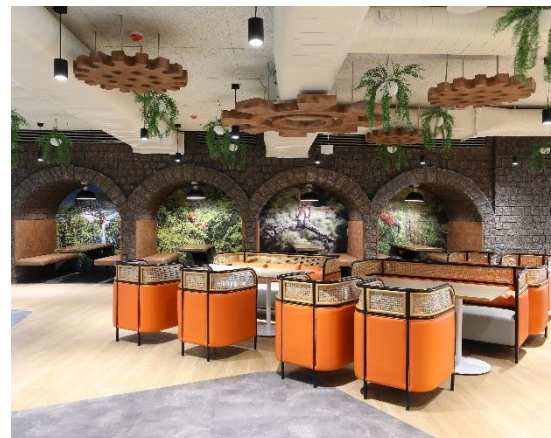
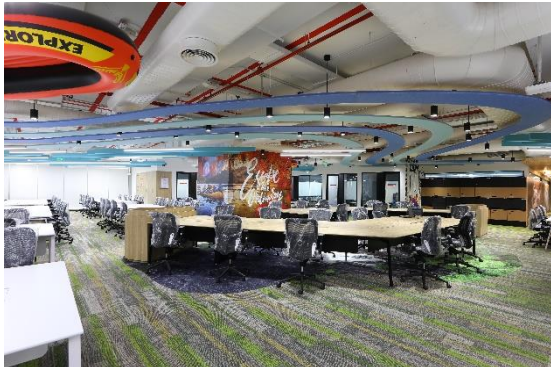


# PROJECTS





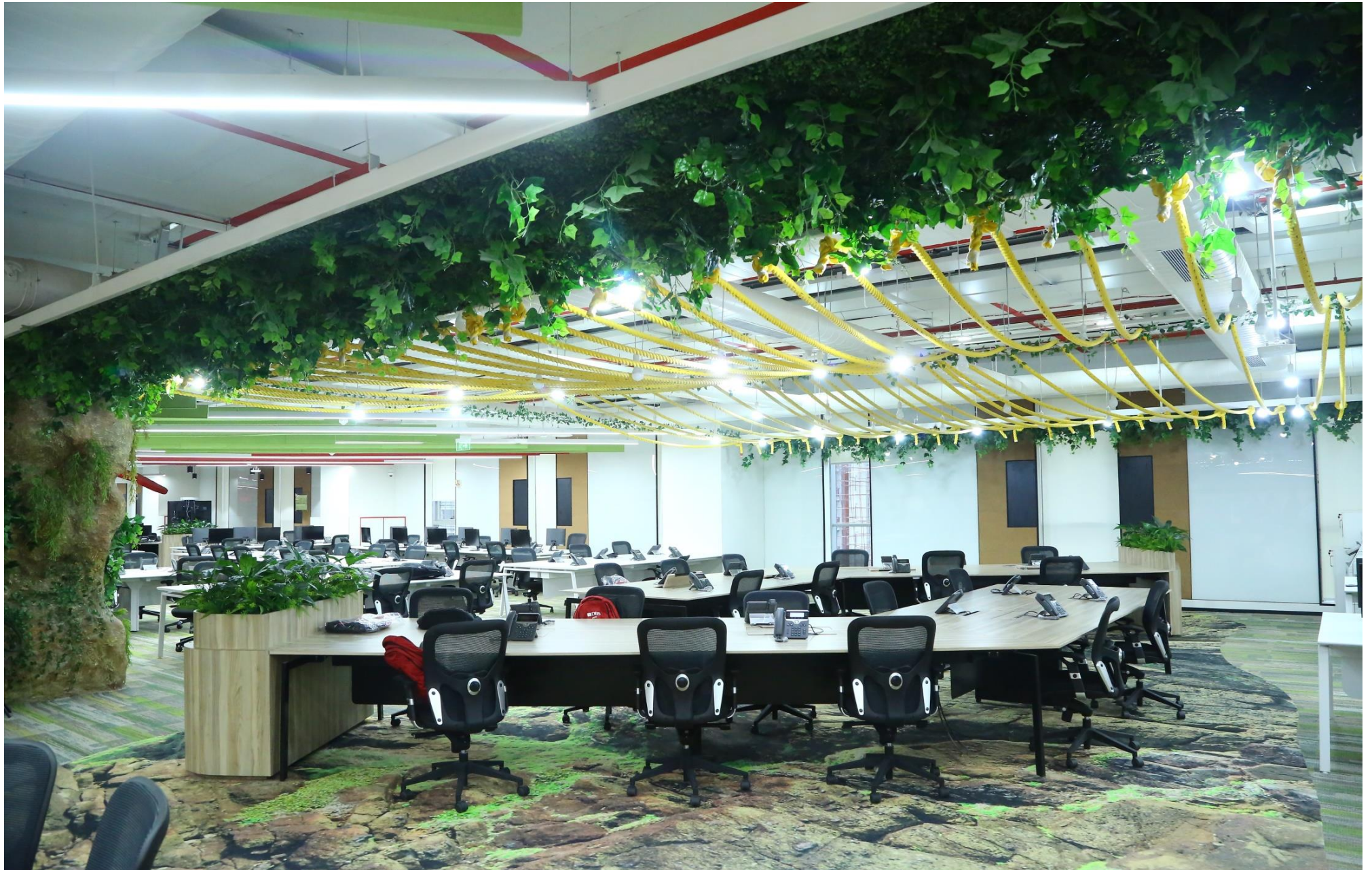
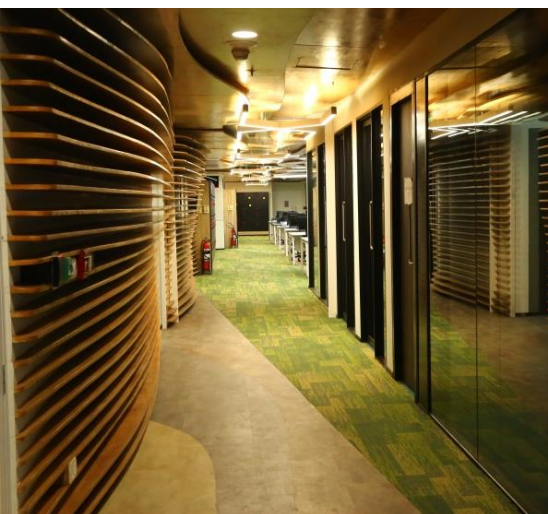
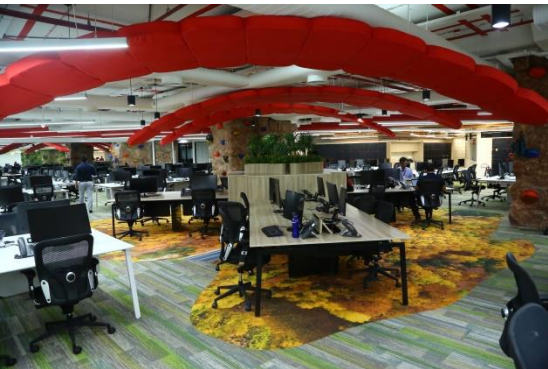
AREA: 100,000 SFT  
 DATE OF COMPLETION: SEP 2020  
 TYPE OF PROJECT: CORPORATE  
 LOCATION: HYDERABAD, SKYVIEW BUILDING  
 16<sup>TH</sup> FLR  
 SCOPE OF WORK: C&I



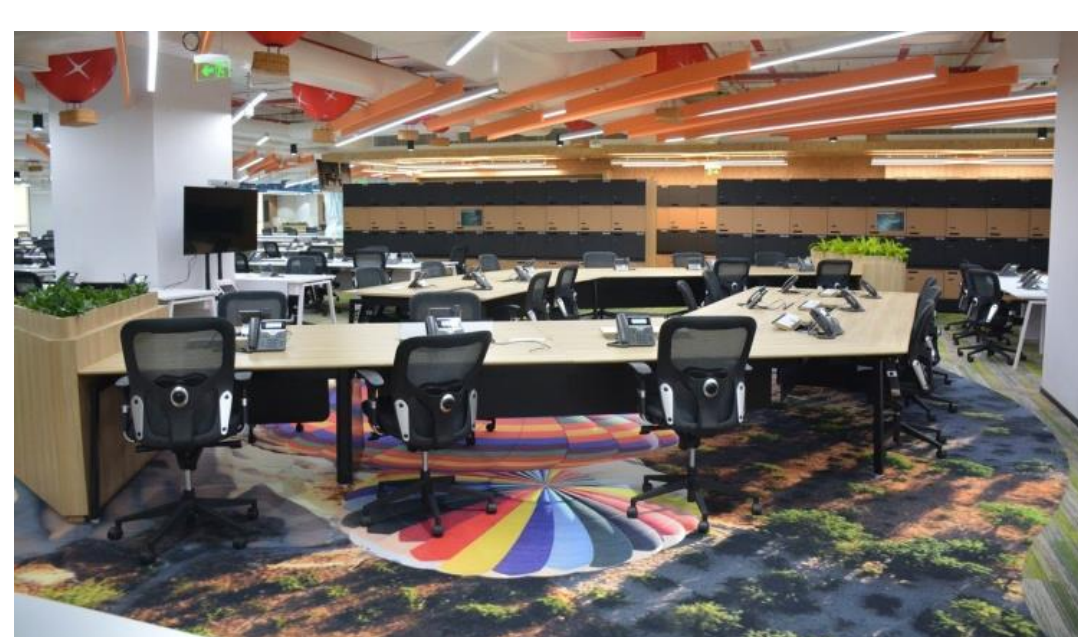




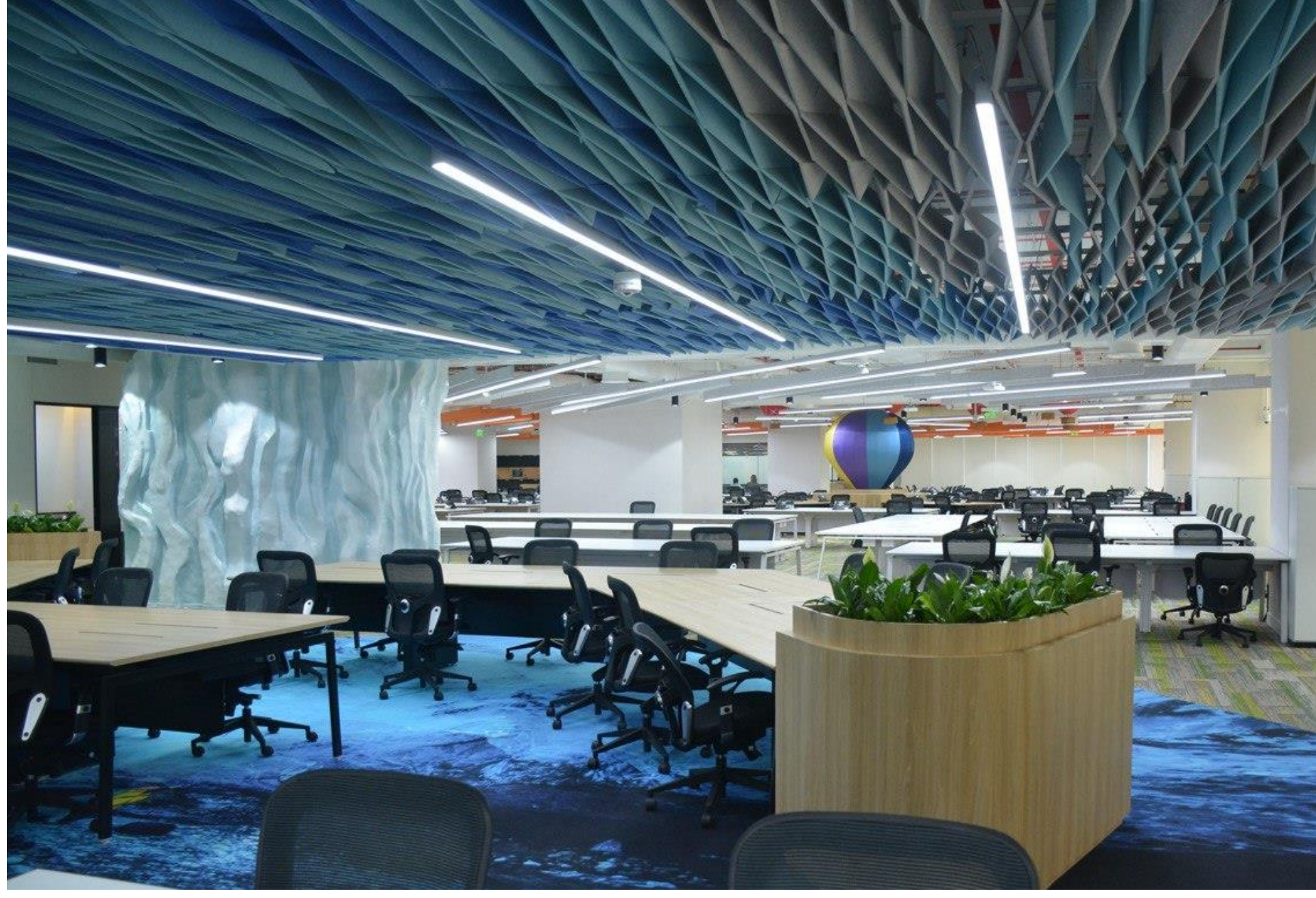
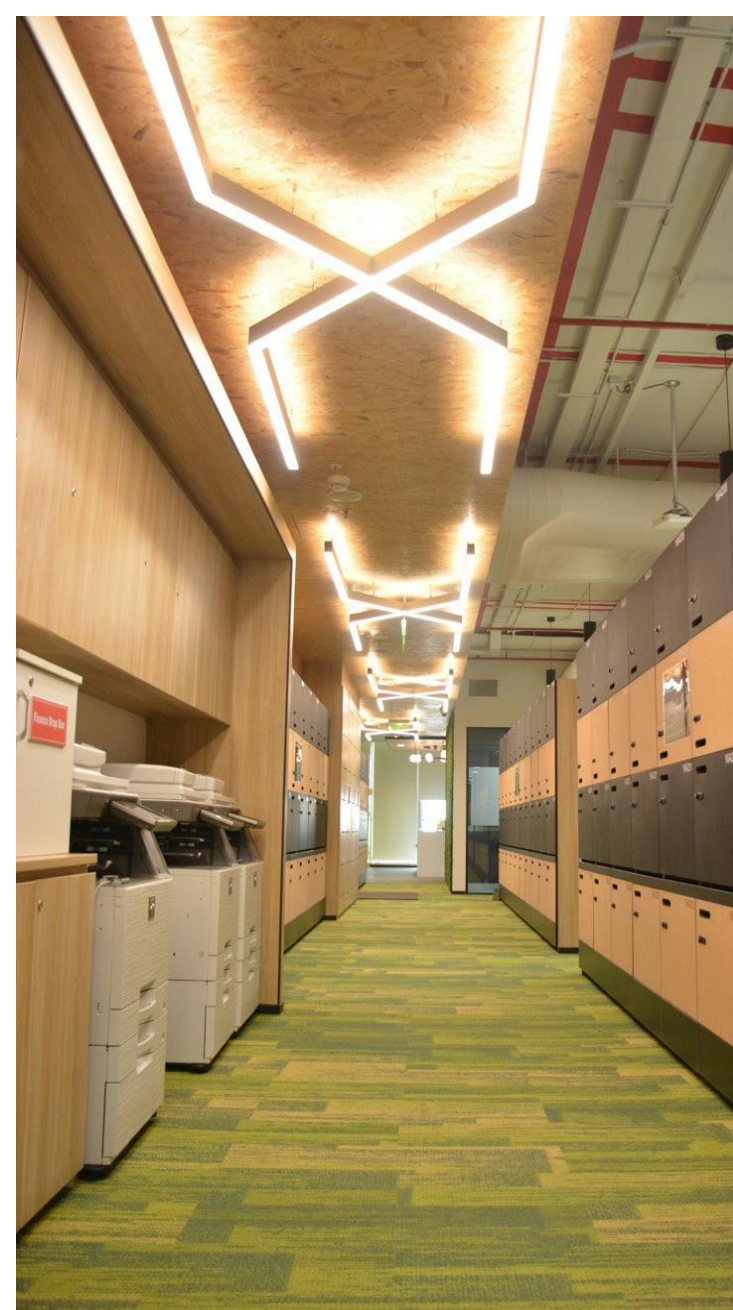
AREA:100,000 SFT  
 DATE OF COMPLETION:SEP 2019  
 TYPE OF PROJECT: CORPORATE  
 LOCATION: HYDERABAD, SKYVIEW BUILDING  
 17<sup>TH</sup> FLR  
 SCOPE OF WORK:C&I



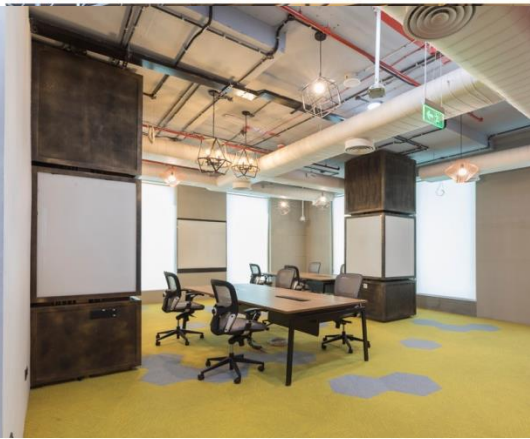




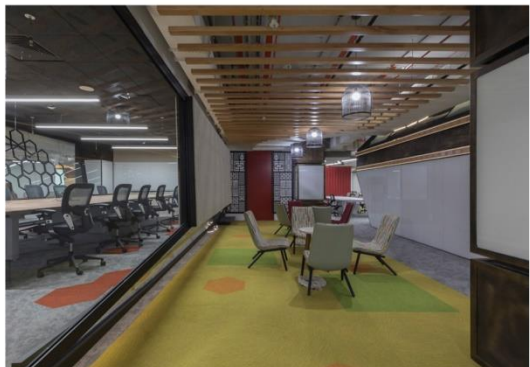
AREA:100,000 SFT  
DATE OF COMPLETION:FEB,2020  
(PHASE 3)  
TYPE OF PROJECT: CORPORATE  
LOCATION:HYDERABAD,SKYVIEW  
SCOPE OF WORK:C&I







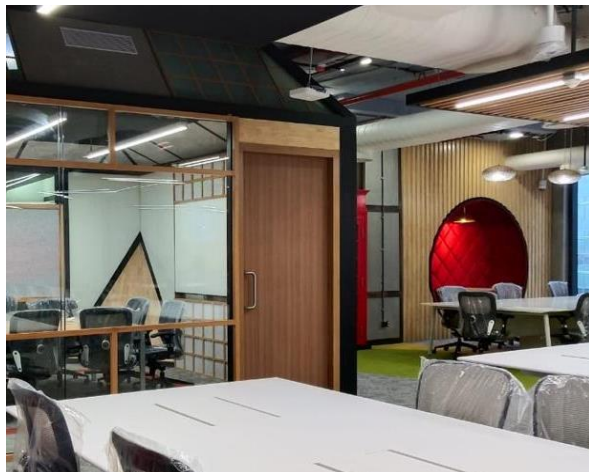
AREA:35,000 sft  
DATE OF COMPLETION:FEB,2018  
TYPE OF PROJECT: CORPORATE  
LOCATION: HYDERABAD, WAVEROCK  
SCOPE OF WORK:C&I







AREA:35,000 sft  
DATE OF COMPLETION:JAN,2019  
TYPE OF PROJECT: CORPORATE  
LOCATION: HYDERABAD, WAVEROCK  
SCOPE OF WORK:C&I





# JPMORGAN CHASE & CO

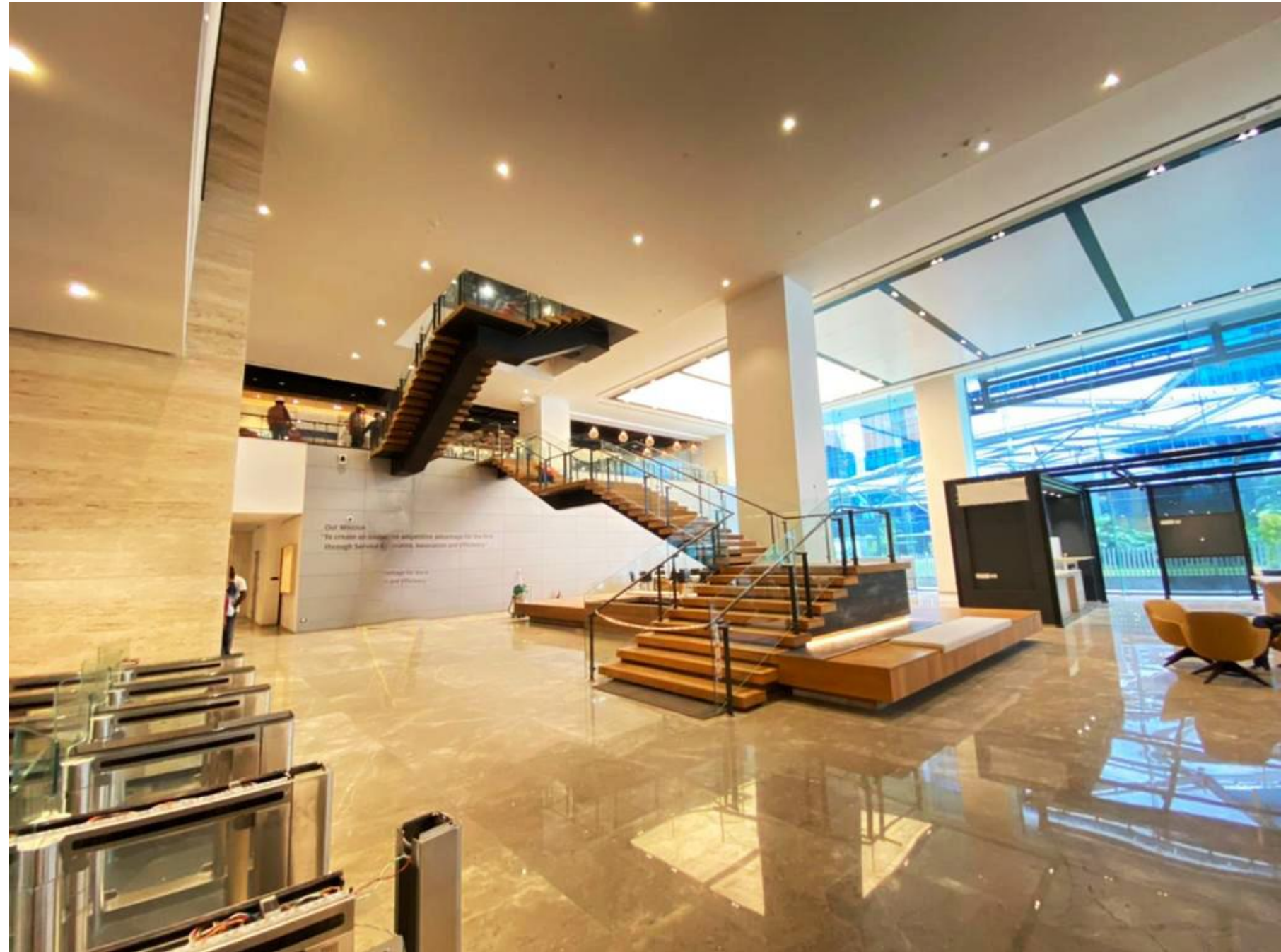
AREA:210,000 sft

DATE OF COMPLETION: Ongoing

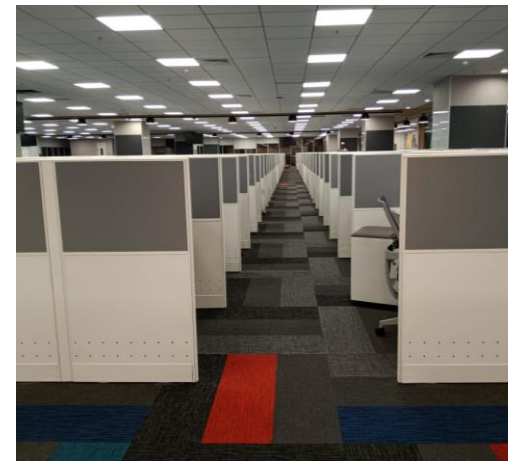
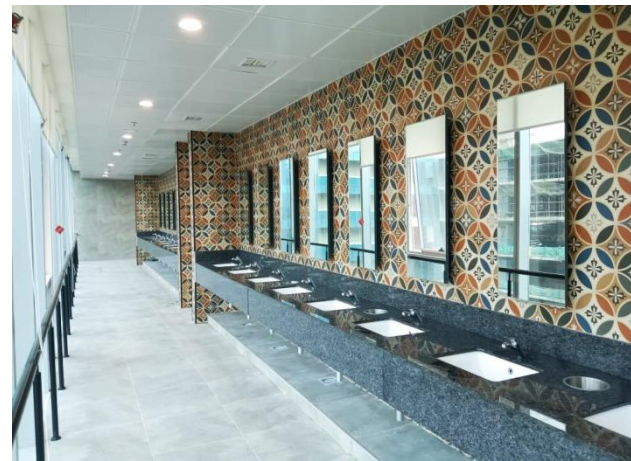
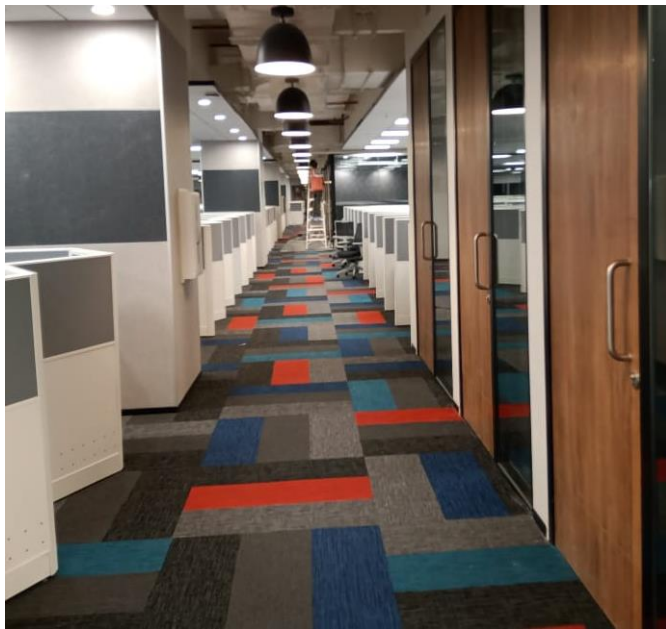
TYPE OF PROJECT: CORPORATE

LOCATION: HYDERABAD, SALARPURIA

SCOPE OF WORK:C&I







# amazon

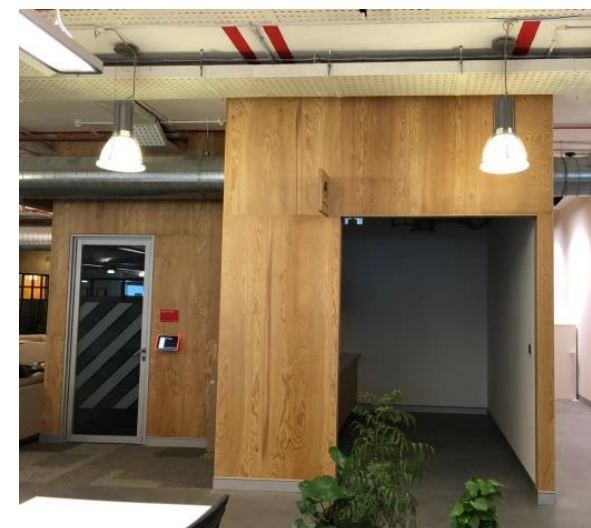
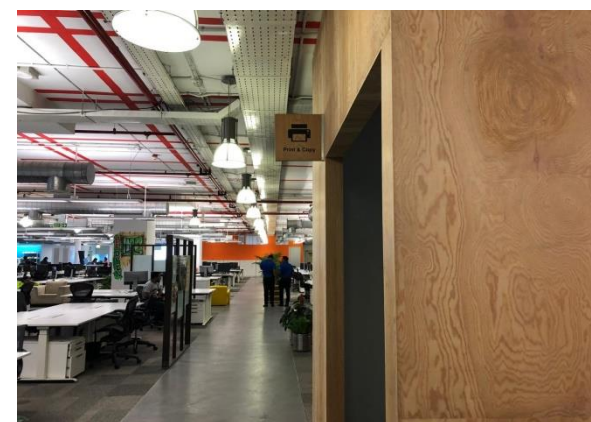
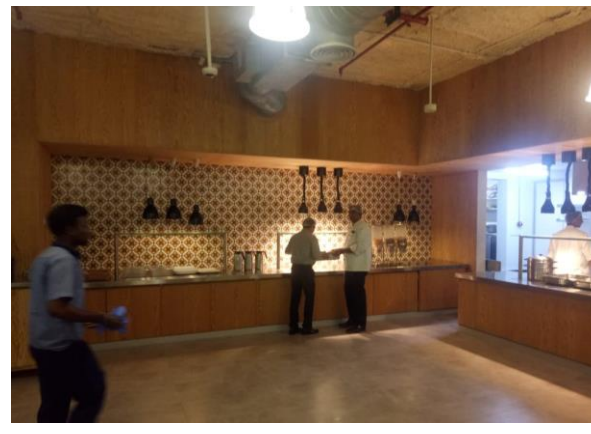
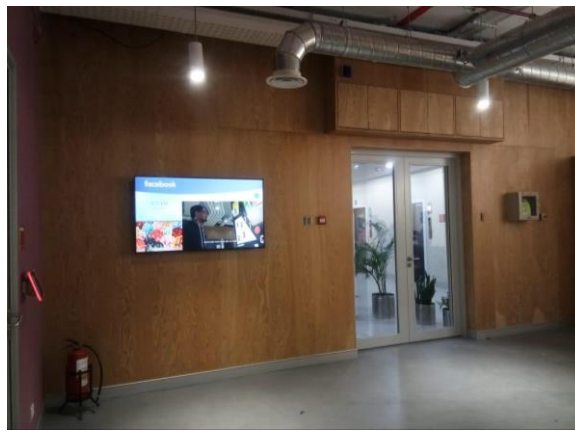
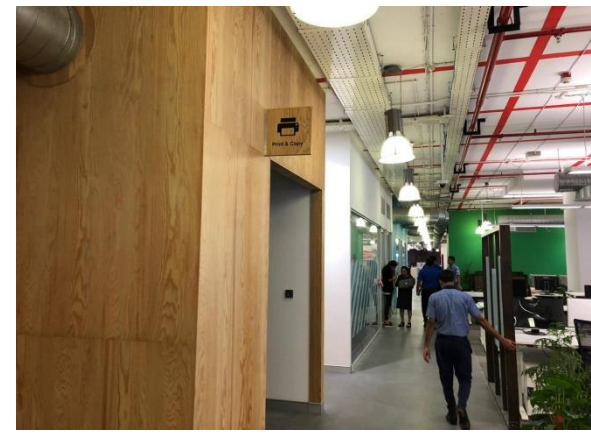
AREA: 1,80,000 SFT  
DATE OF COMPLETION: JAN, 2020  
TYPE OF PROJECT: CORPORATE  
LOCATION: HYDERABAD, GAR  
6<sup>th</sup> AND 7<sup>th</sup> FLOOR  
SCOPE OF WORK: C&I , PLUMBING AND  
SPRINKLER SYSTEM



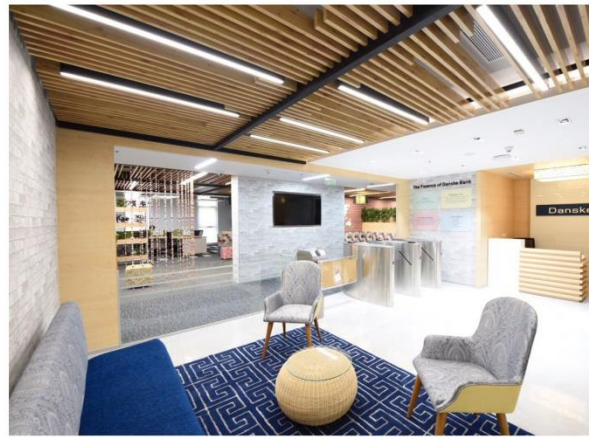
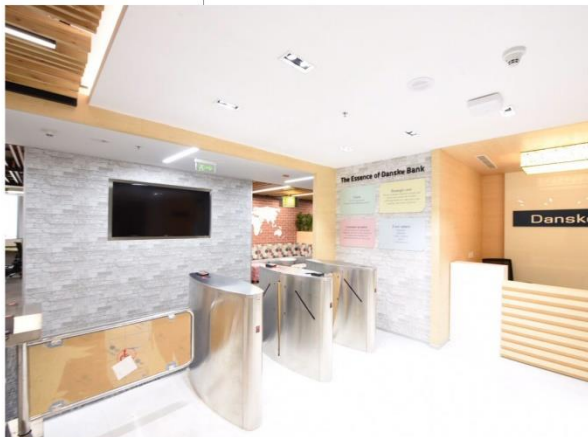


facebook

AREA: 75,000 SFT  
DATE OF COMPLETION: DEC, 2018  
TYPE OF PROJECT: CORPORATE  
LOCATION: RAHEJA BLD NO 20  
SCOPE OF WORK:GC

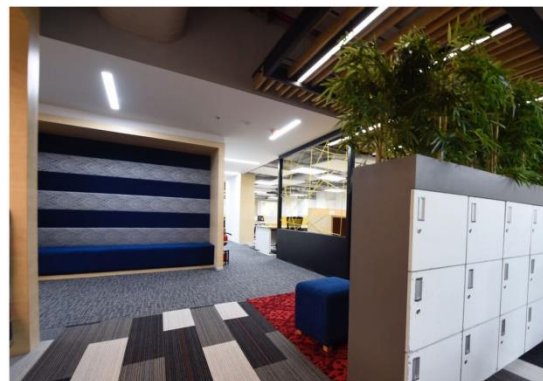






Danske  
IT

AREA:30,000 SFT  
DATE OF COMPLETION:JULY,2017  
TYPE OF PROJECT: BANK  
LOCATION:BENGALURU  
SCOPE OF WORK:C&I

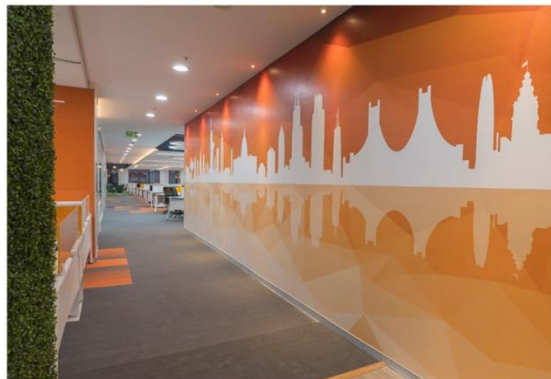






# TERADATA.

AREA: 100,000 SFT  
 DATE OF COMPLETION: JAN, 2018  
 TYPE OF PROJECT: CORPORATE  
 LOCATION: HYDERABAD, ASCENDAS  
 BUILDING  
 SCOPE OF WORK: GC



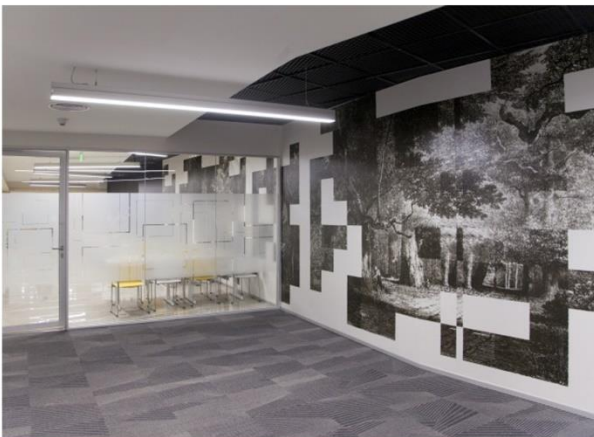




**“ The Day You Stop Learning Is The Day You Start  
Dying”**

Albert Einstein





# OPENTEXT™

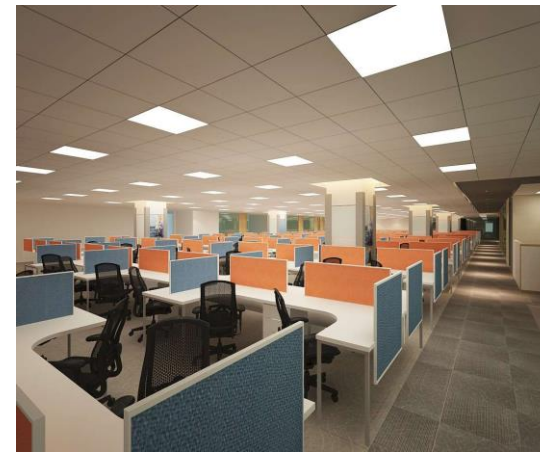
LOCATION :HYDERABAD,RAHEJA  
 AREA:90,000 SFT  
 DATE OF COMPLETION:FEB,2017  
 TYPE OF PROJECT: CORPORATE  
 SCOPE OF WORK:C&I





flex™

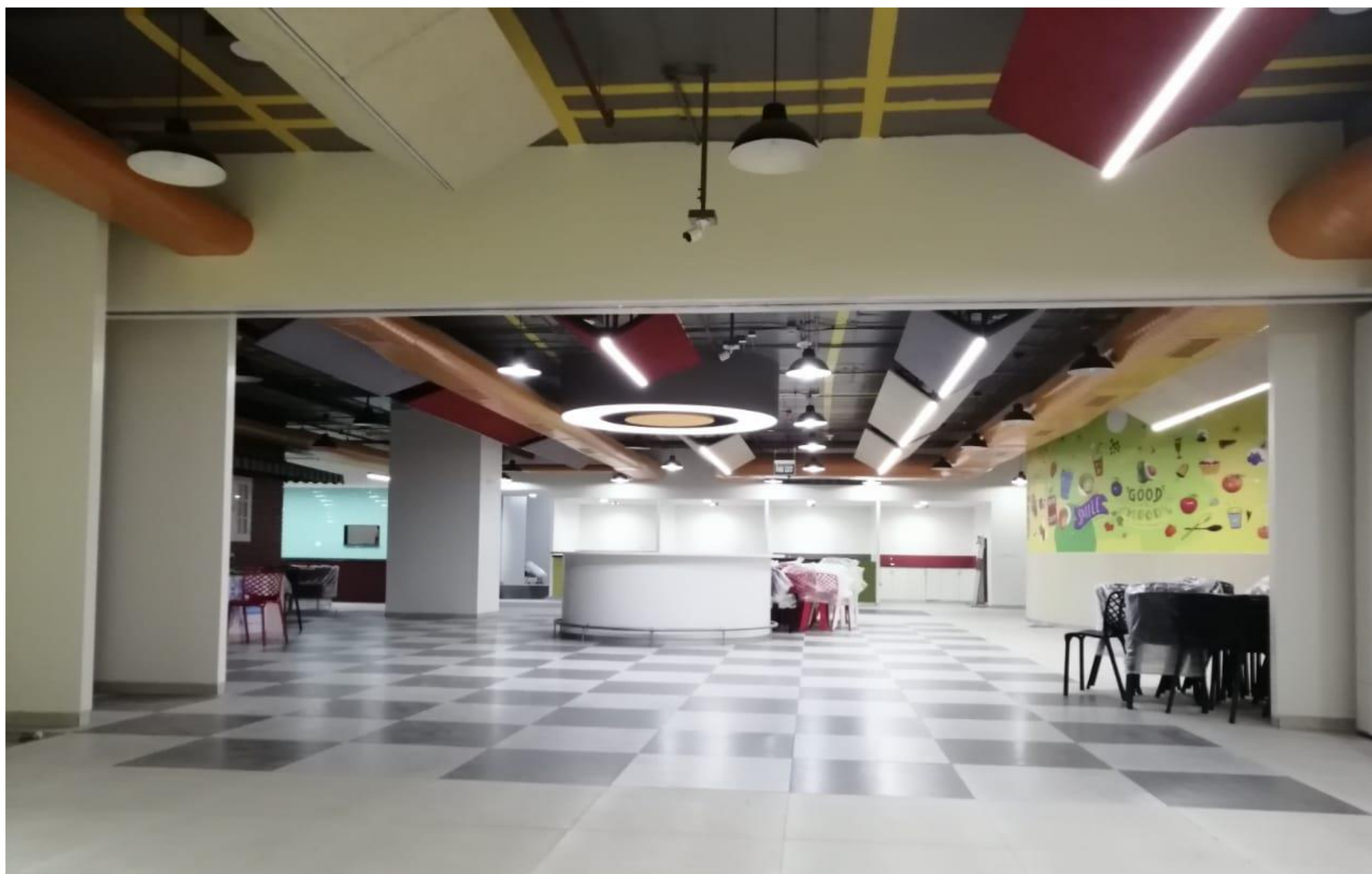
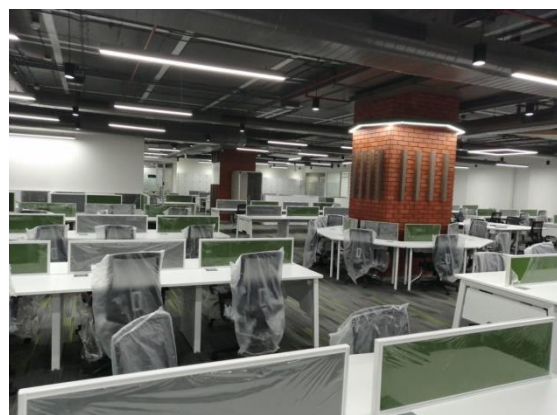
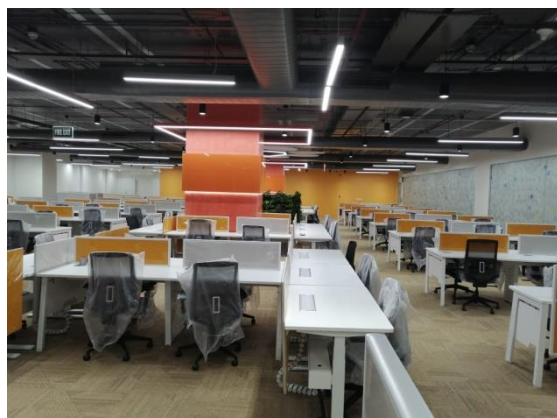
AREA: 1,90,000 SFT  
DATE OF COMPLETION: 2014  
TYPE OF PROJECT: CORPORATE  
LOCATION: PUNE  
SCOPE OF WORK: C&I







AREA:1,50,000 SFT  
DATE OF COMPLETION:NOV, 2019  
TYPE OF PROJECT: CORPORATE  
LOCATION: HYDERABAD, SKYVIEW  
BUILDING, 14<sup>th</sup> & 15<sup>th</sup> FLOORS  
SCOPE OF WORK:GC

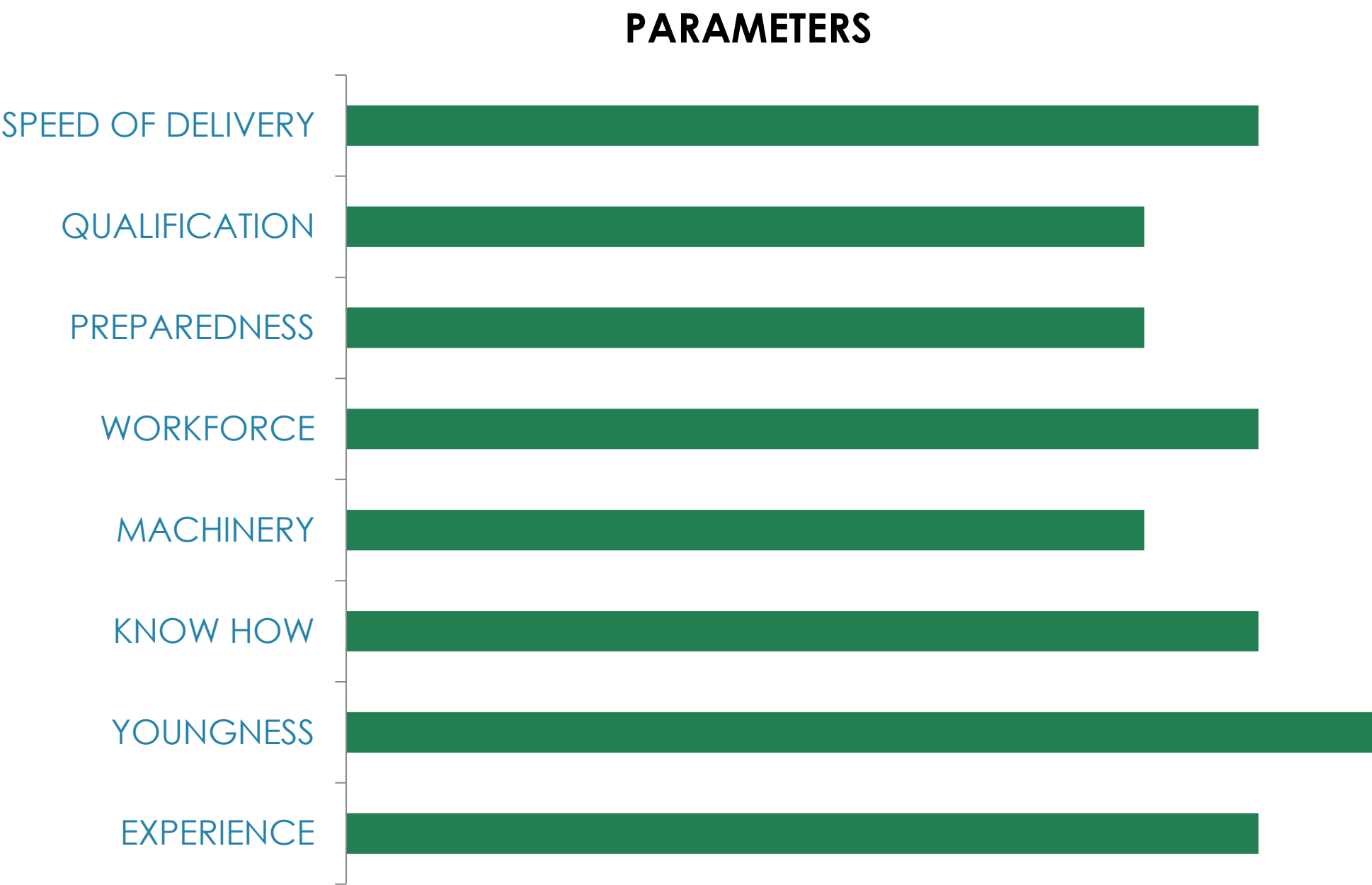




# CONCLUSION

*“We have come a long way and yet have a long way to go”*

## BIRD’S EYE VIEW OF NORTHSTAR



# CONCLUSION

*The overall preparedness for any project is always on the challenge side*

*The desire to learn and thirst for experience is never ending at Northstar*

*The ability to absorb pressure and having tremendous patience at all levels is a skill that has helped us advance in our field.*

*Our past experiences and lessons learnt not only motivated us to increase our capability, but also helped us to evolve.*

*On a final note, Northstar is as prepared as clients expectations and is willing to go through transformation by the TRADE*



# HEAD OFFICE

## HYDERABAD

### NORTHSTAR ELEMENTS

PLOT NO 8-2-293/82/A/1057/F1

Third Floor, Road No.45

Jubilee Hills, Hyderabad-500 0083

Phone no: +91-40-23336662/3

[www.nselements.in](http://www.nselements.in)

# BRANCH OFFICE

## PUNE

### NORTHSTAR ELEMENTS

FLAT NO A6-404, MEGAPOLIS SUNWAY HINJEWADI PHASE 3 CITY:

PUNE(M CORP)-411057 TALUKA-PUNE CITY, DISTRICT-PUNE

## BANGALORE

### NORTHSTAR ELEMENTS

FLAT NO 1A SILVER SPRINGS APTS,

KADUGODI POST,

BENGALURU – 560067

## MUMBAI

### NORTHSTAR ELEMENTS

FLAT NO 302,BLD NO: 03, KH-3,

SANSKRUTHI SOCIETY.VASTUVIHAR, SECTOR 16-/17,KHARGAR,

NAVI MUMBAI-410210

